

Preparing Images for DPI Competitions using Adobe LightRoom

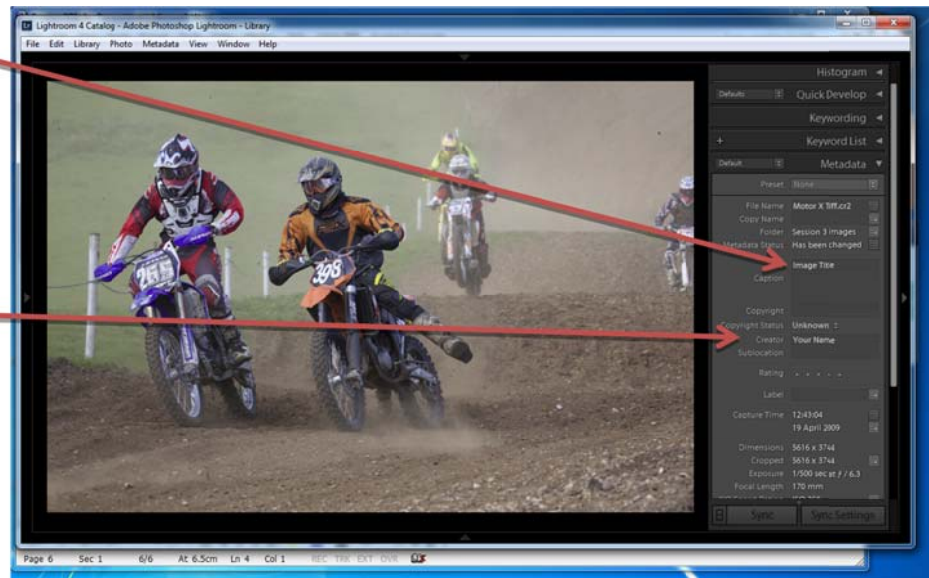
After you have finished all your adjustments, image manipulations and cropping before doing anything else **Save this image file** then:

**Change Size to fit within a size of 1400 pixels maximum width by 1050 pixels maximum height:
*(note that these are maximums and neither dimension should be exceeded)***

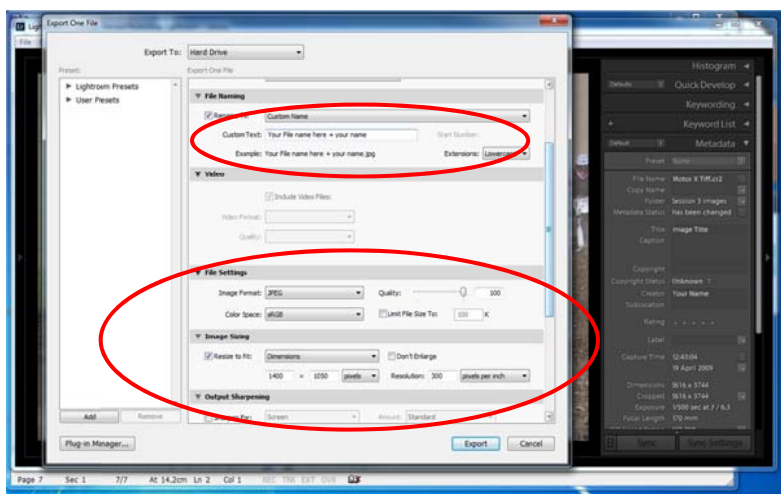
You now need to add the EXIF data so that the Competition Secretary can display your image and record your score. From the top menu bar select File, then File Info:

Insert your image title here

Insert your name here and ALWAYS use the same format for all future entries. This is important because it allows the software to automatically maintain an accurate record of your cumulative



Then Export your image to a suitable location on your computer (undertaken by right-mouse click on the image as follows:



NOW FINALLY DOUBLE-CHECK THAT ALL IS OKAY.

DO THIS BY CARRYING OUT THE FOLLOWING SIMPLE INSTRUCTIONS.

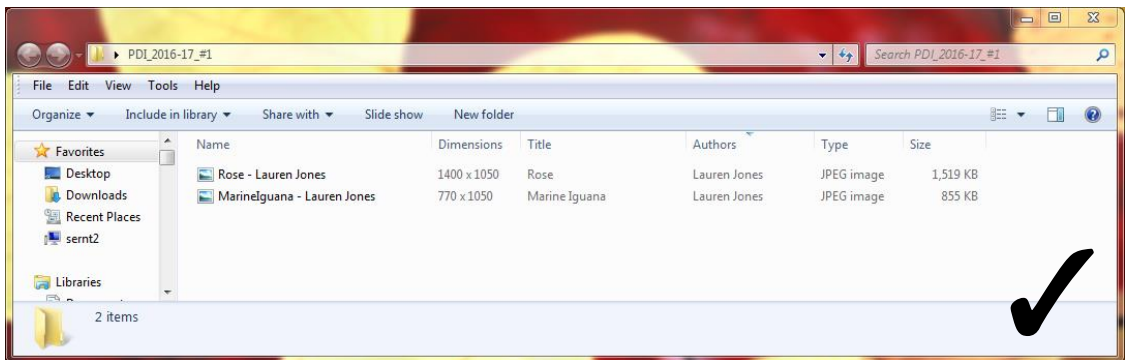
PDI competition entries

Checklist:

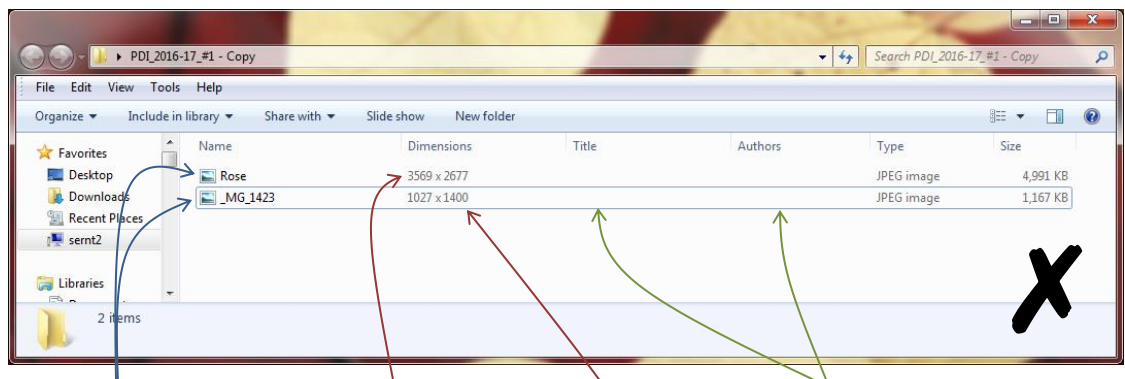
- 1400px wide by 1050px tall
- your name (author) and image title entered into the metadata/EXIF data
- Files should be named in the following format "imagetitle-authorname", e.g. "Rose-LaurenJones"

PLEASE CHECK YOUR FILES BEFORE SENDING THEM TO THE PDI SECRETARY!

Correct



Incorrect



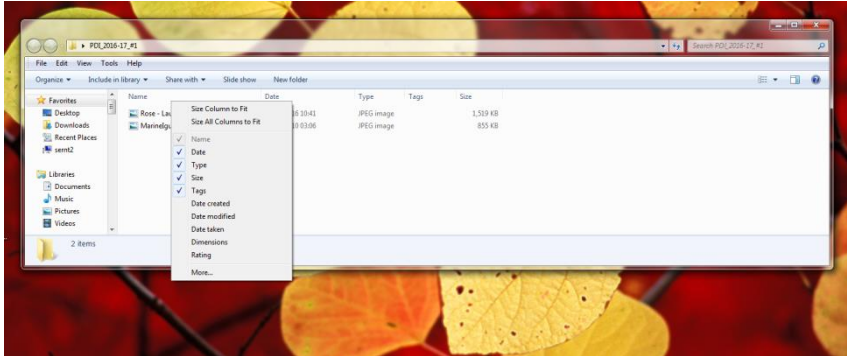
Files not named
"ImageTitle-
AuthorName"

Image too big

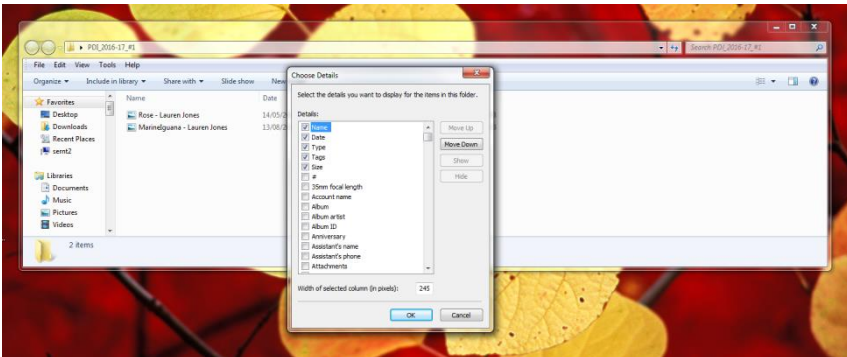
Image too tall (max
= 1050 high)

No metadata/EXIF
data

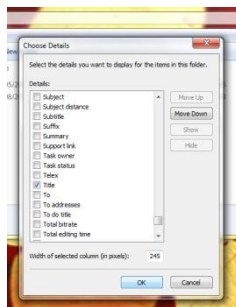
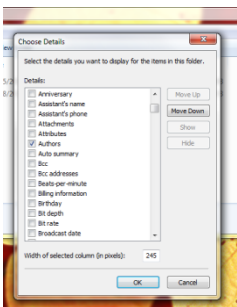
How to check your entries in Windows Explorer:



- 1) Right click on the heading bar
- 2) Then click on the “More” option at the bottom

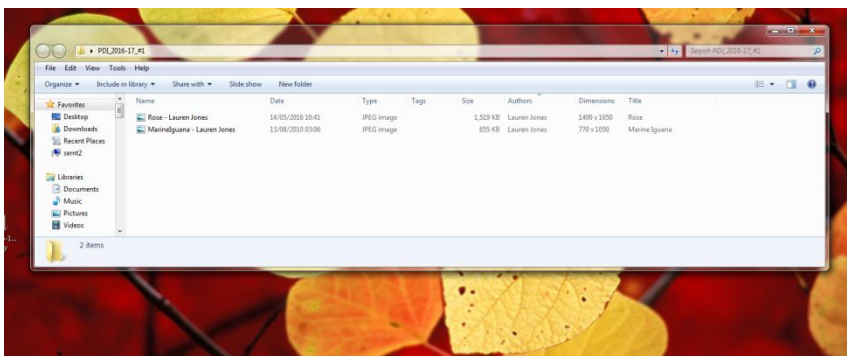


- 3) That brings up this box



- 4) Scroll down, and click on the small boxes to select “Author”, “Dimensions” and “Title”

- 5) Click the “OK” button



- 6) Done!